



FLORENCE-DARLINGTON TECHNICAL COLLEGE

EARLY COLLEGE ACADEMY

CAREER PATHWAYS

FOLLOW US

    fdtc.edu





QUALITY EDUCATION



TOP NOTCH INSTRUCTION



PATHWAYS THAT MATTER

CONTENTS

01

What is Early College Academy?

02

What's the difference? AP, IB, Dual Enrollment

04

Transfer Opportunities

06

What are our available Career Pathways?

08

Career Pathway: Associates of Arts

09

Career Pathway: Associate of Science

10

Career Pathway: Accounting

11

Career Pathway: Civil Engineering

12

Career Pathway: Computer Technology

13

Career Pathway: Criminal Justice

14

Career Pathway: Early Care & Education

15

Career Pathway: Electronics Engineering

16

Career Pathway: Human Services

17

Career Pathway: Management

18

Career Pathway: Marketing

19

Career Pathway: Mechanical Engineering

20

Career Pathway: Paralegal

23

Certificate Pathways

24

Allied Health Pathways

26

Free campus resources & services

27

Contact Information

WHAT IS EARLY COLLEGE ACADEMY?



Florence-Darlington Technical College (FDTC) Early College Academy (ECA) provides public, private, charter, and home school association students with equitable access to college-level courses while still in high school. The program accelerates pathways to degree completion, allowing students quicker entrance into the workforce or a 4-year college experience with junior status. We are committed to creating fast-track educational opportunities for high school students interested in getting a head start on their careers. Our ECA programs enable students to eliminate two additional college years and accumulated debt.

FDTC's ECA program is an innovative way for high school students to earn both a high school diploma and complete an associate degree in the time it takes to attend high school. FDTC's ECA program is an equitable opportunity for all students and requires maturity, dedication, and academic rigor for career exploration.

These seamless educational opportunities provide equity and access to all students from 9th to 12th grades throughout Florence, Darlington, and Marion Counties. Our ECA program is aligned with K-12 curriculum and Career and College ready standards adopted by the S.C. Board of Education. This program offers College Transfer Pathways and Career Technical Education (CTE) programs leading to a college degree while attending high school.

In an effort to provide students with more options to fast-track their career goals, we have provided the clear pathways presented throughout this guide, wrap-around services like tutoring, career job fairs, and other student success services. Our goal is to prepare and increase access and completion rates of post-secondary degree attainment through students earning college credits while removing time and cost barriers.

Our goal is for your seniors to graduate from high school with a high school diploma plus an Associate Degree from Florence-Darlington Technical College. By accomplishing this feat, your students will already be fully trained for today's highly skilled workforce needs or can transfer to a 4-year University and begin the next level of their college experience as a junior. This pathway allows your students to achieve their dreams at a fraction of the cost of attending a 4-year institution.

Let us help you make this happen! See our Dual Enrollment/Early College Office for more information. Scholarship opportunities are available.



As a student in the Florence-Darlington Technical College Early College Program, I learned academically, but I also learned life skills. One of those skills was time management. Once I started my journey at the College of Charleston, I took those time management skills and applied them, which put me a step above my peers who were just learning how to manage their workload, as well as their social life. I also learned the importance of maintaining relationships with my professors. I saw how just a simple email could go a long way when it comes to leaving a lasting impression on professors. The Early College program made my transition into undergrad as smooth as possible. I am so grateful for the lessons that I learned while in the FDTC Early College Program.

Janiya Plowden

2019 Wilson High School Graduate

2021 College of Charleston Graduate | Bachelor of Science, Public Health
May 2023 Begins Physician Assistant Studies Program (PAS) at MUSC



ECA VS. DUAL ENROLLMENT

FDTC's **Dual Enrollment Program** refers to students being enrolled in two distinct academic programs or educational institutions while earning credit at both institutions. A Dual Enrollment or Dual Credit course is any course taken that gives high school students the opportunity to earn both high school and college credit. Dual Enrollment students often complete a few transferable credit courses to carry with them to a four-year college or university; however, they will not earn a degree.

Early College Academy refers to student groups at designated high schools who are pursuing an associate degree alongside their high school diploma. One of the best features of the Early College Academy is that students control their own path. Early College Academy students will complete a full associate degree in general education courses or in a specific technical training field.

What's the difference between Dual Enrollment and other the options available to high school students? See below for a comparison of Advanced Placement (AP) credit program, the International Baccalaureate (IB) diploma program, and Dual Enrollment/Dual Credit program.

AP | ADVANCED PLACEMENT CREDIT

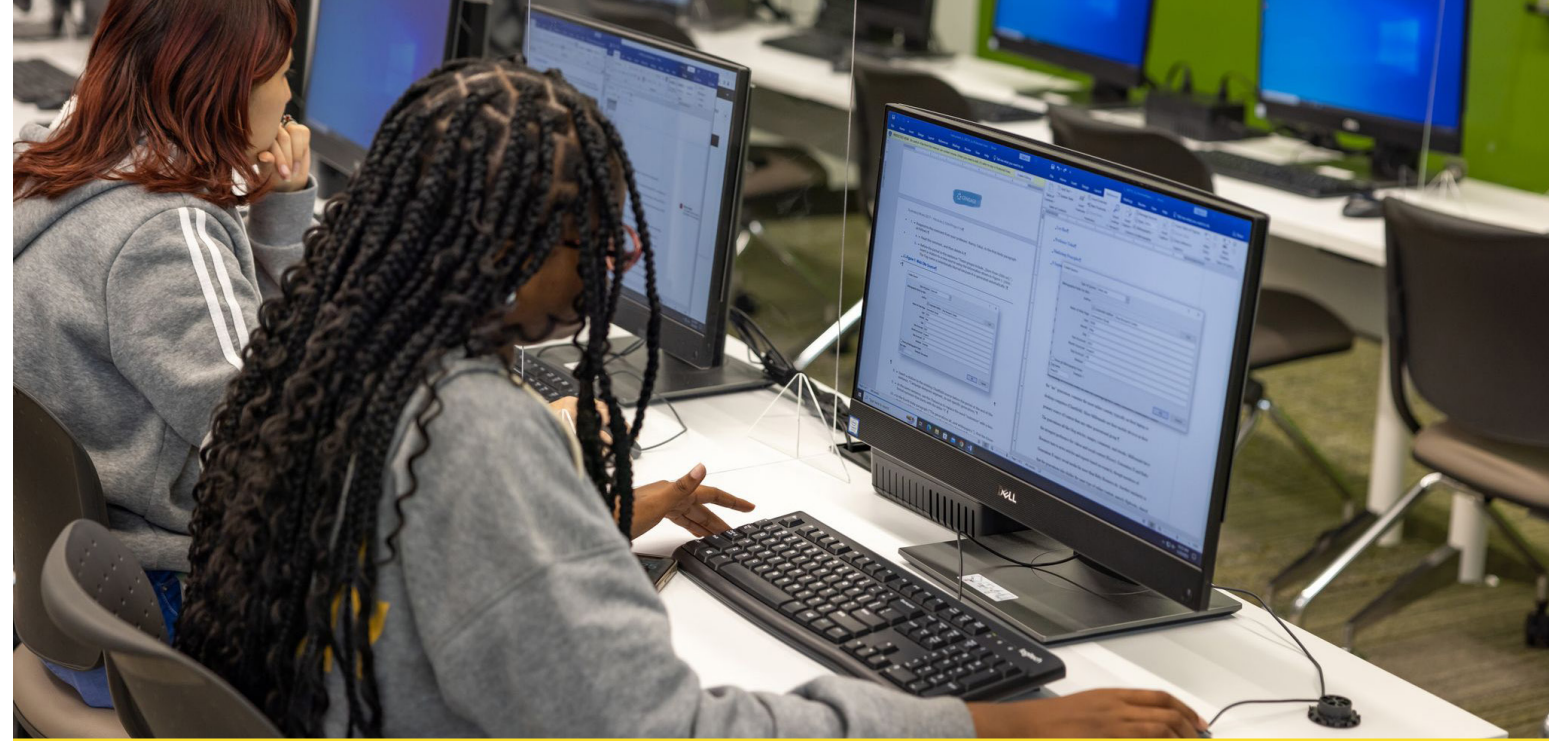
- Emphasis more on course content and testing knowledge
- National Standards (exam required); must score "3" or higher on national exam to earn college credit
- If the student passes the high school course, but not the exam, no college credit
- AP courses are year-long courses

IB | INTERNATIONAL BACCALAUREATE DIPLOMA

- Emphasis more on writing and developing critical thinking skills
- International Standards, Honors, High School Diploma; International Exam required to earn college credit
- Offered to 9th-12th grade students; exams are graded on a scale of 1-7. Must score a "4" or higher to earn college credit.
- IB courses are year-long courses

DUAL ENROLLMENT / DUAL CREDIT

- 2-year degree, opens up the possibilities for all students; equity and access
- 1-year certificate or Workforce Development
- Only need a "C" or higher; no board exam required to earn college credit
- DE courses weigh the same as AP credit - not all high schools have AP program
- Credits earned go towards Life Scholarship credits
- Earn a college degree at the same time as a high school diploma
- Credits earned with a "C" or higher are accepted at most colleges and universities
- Technical Workforce Training for employment opportunities
- Dual Enrollment courses last for a term (semester or minimester)



ARE HIGH SCHOOL STUDENTS COLLEGE READY?

According to S.C. Department of Education Report Card Data from 2021-2022, on average more than 73 percent of graduates from Florence, Darlington, and Marion Counties have shown an interest in a college education. However, the data also shows that on average less than 22 percent of these students are actually considered college ready. The Florence-Darlington Technical College Early College Academy is designed to help better prepare students for college.

High School	% College Ready	% of Graduation Cohort Completing College Application
Darlington	13.1%	37.6%
Hannah-Pamplico	22.6%	91.5%
Hartsville	22.7%	100%
J. Paul Truluck	40.0%	90%
Johnsonville	25.3%	88.4%
Lake City	11.7%	20.9%
Lamar	17.0%	100%
Marion	6.0%	40.5%
Mullins	11.2%	53.7%
South Florence	18.4%	90.1%
West Florence	38.1%	82.6%
Wilson	36.4%	81.0%

SOURCE: S.C. DEPARTMENT OF EDUCATION HIGH SCHOOL REPORT CARD DATA 2021-2022

OUR TRANSFER PROGRAM

Florence-Darlington Technical College has a number of articulation agreements with colleges around the state that allow our credits to directly transfer to them. Visit sctrac.org for a full listing of programs and courses that transfer to the colleges below.



WHAT ARE CAREER PATHWAYS?

Florence–Darlington Technical College offers a variety of options for high school students through our Early College Academy. The pathways listed hereafter are meant to be taken alongside a high school students' normal coursework required for high school graduation. All course layouts are recommended but not required, unless otherwise stated, as some courses are only offered during certain terms. Students may change the order of courses as long as all prerequisites are met. Students may begin these pathways as soon as the 9th grade. The following is a list of those pathways:

Associate in Arts (AA)

The Associate in Arts degree program is designed for students who wish to transfer to a four-year college or university to earn a Bachelor of Arts (or Bachelor of Science, depending upon the university) degree in a non-scientific liberal arts field of study.

Associate in Science (AAS)

The Associate in Science degree program provides science instruction in biology, chemistry, and physics to enable students to complete their respective curricular programs, transfer college credits through the Associate in Science degree program, or meet the workplace requirements of local business and industry through specialized training.

Accounting

Graduates with an Accounting degree demonstrate core skills in the following: accounting, business, business ethics, business law, and computer applications. Graduates are prepared for careers in general accounting, financial accounting, cost accounting assistance, accounts payable, payroll, and purchasing.

Civil Engineering Technology

The Civil Engineering Technology program (CET) uses classroom and laboratory experiences to provide students technical, computer aided drafting skills, which will prepare them for careers in the environmental field, surveying, construction management, design, and testing.

Computer Technology - Network Systems Management

The Computer Technology - Network Systems Management program prepares students for entry-level positions as network administrators, network managers, network designers, network operations specialists, network technicians, network installers, network support specialists or IT technicians.

Criminal Justice

Criminal Justice Technology prepares students for a broad variety of careers in policing, corrections, courts, private security, and homeland security. Personnel in this vocation are employed by private, local, state, and federal agencies.

Early Care & Education

The Early Care & Education program prepares students to be preschool teachers and educate and care for children younger than age 5 who have not yet entered kindergarten. They teach language, motor, and social skills to young children in centers designed for childcare.

Electronics Engineering Technology

The Electronics Engineering Technology program (EET) uses classroom and laboratory experiences to provide students with applied technical skills. Electronics engineering technicians help engineers design and develop computers, communications equipment, medical monitoring devices, navigational equipment, and other electrical and electronic equipment.

Human Services

The Human Services program prepares students for employment in helping professions including direct and indirect client care, assessing client needs, leading group activities, assisting clients in need of counseling and/or crisis intervention, teaching daily living skills, acting as a liaison for family members, providing emotional support, and treatment plan participation.

Management

Graduates with a management degree receive training in accounting, advertising, business, business ethics, business law, computer applications, leadership, and small business operations and will develop skills in planning, staffing, organizing, leading, and monitoring the operations of a business.

Marketing

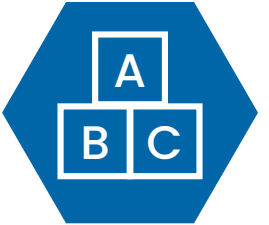
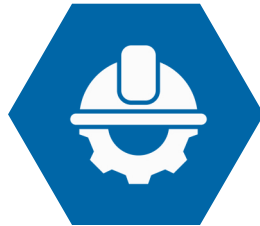
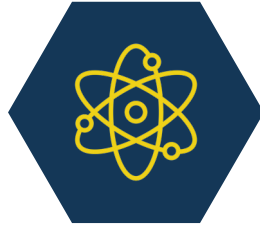
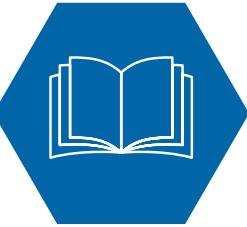
Graduates with a degree in Marketing learn the fundamental concepts in marketing and business management. They also receive training in computer graphics to market business ideas and concepts, oral and written communication skills, critical thinking skills and problem solving skills for both academic and workplace situations.

Mechanical Engineering Technology

The Mechanical Engineering Technology program (MET) uses classroom and laboratory experiences to prepare graduates to work as engineering technicians and related engineering technology positions in various industries and production facilities. Mechanical engineering technicians help mechanical engineers design, develop, test, and manufacture mechanical devices, including tools, engines, and machines.

Paralegal

Paralegals can be found in all types of organizations, but most are employed by law firms, corporate legal departments, and various government offices. Paralegals assist lawyers in closings, hearings, trials, corporate meetings, and other professional responsibilities.





EARLY COLLEGE PATHWAY

Associate in Arts (AA) Degree

9TH GRADE

FALL SEMESTER

English I and/or English II
Algebra I and/or Geometry
Physical Science
CPT 170* | Microcomputer Apps
COL 103 | College Skills

**CPT 170 is CP weighted on high school transcript*

SPRING SEMESTER

Spanish I
PE/ROTC
Biology I
GEO 102 | World Geography
THE 101 | Intro to Theatre

10TH GRADE

FALL SEMESTER

English II and/or English III
Geometry and/or Algebra II
Spanish II
PSC 201 | American Government
ECO 210 | Macroeconomics

SPRING SEMESTER

English III and/or English IV
Algebra II and/or Pre-Calculus
SOC 101 | Intro to Sociology
SPC 205 | Public Speaking

11TH GRADE

FALL SEMESTER

English IV and/or ENG 101
English Composition I
SPA 101 | Elementary Spanish I (4 Hours)
HIS 201 | American History to 1877
Choice (High school or dual credit)

SPRING SEMESTER

ENG 101/102 | English Composition I & II
SPA 102 | Elementary Spanish II (4 Hours)
HIS 202 | American History 1877-Present
MAT 110 | College Algebra

12TH GRADE

FALL SEMESTER

ENG 205 or 206 | English Literature I or II
Natural Science (4 Hours)
(ex. BIO 101, BIO 210, CHM 110, or PHY 201)
HIS 101 | Western Civilization to 1689*
**Not required*
Choice (High school or dual credit)

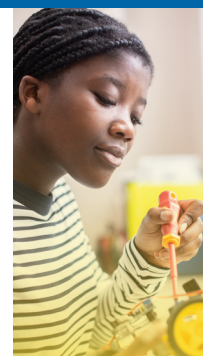
SPRING SEMESTER

MAT 120 | Probability & Statistics
Natural Science (4 Hours)
(ex. BIO 101, BIO 210, CHM 110, or PHY 201)
PSY 201 | General Psychology
Choice (High school or dual credit)

TOTAL CREDIT HOURS 67*

***Unless specified otherwise, all classes are 3 credit hours.**

This sequence allows for students not completing English I and Algebra I in 8th grade to complete the degree.
Please note this track is subject to change as the student's high school schedule changes.



EARLY COLLEGE PATHWAY

Associate in Science (AS) Degree

9TH GRADE

FALL SEMESTER

English I and/or English II
Algebra I and/or Geometry
Physical Science
CPT 170* | Microcomputer Applications
COL 103 | College Skills

**CPT 170 is CP weighted on high school transcript*

SPRING SEMESTER

Spanish I
PE/ROTC
Biology I
GEO 102 | World Geography
THE 101 | Intro to Theatre

10TH GRADE

FALL SEMESTER

English II and/or English III
Geometry and/or Algebra II
Spanish II
PSC 201 | American Government
ECO 210 | Macroeconomics

SPRING SEMESTER

English III and/or English IV
Algebra II and/or Pre-Calculus
SPC 205 | Public Speaking
HIS 201 | American History to 1877

11TH GRADE

FALL SEMESTER

English IV and/or ENG 101
English Composition I
MAT 110 | College Algebra
HIS 202 | American History 1877-Present
Natural Science (4 Hours)
(ex. BIO 101, BIO 210, CHM 110, or PHY 201)

SPRING SEMESTER

ENG 101/102 | English Composition I & II
MAT 111 | College Trigonometry
SPA 101 | Elementary Spanish I (4 Hours)
Natural Science (4 Hours)
(ex. BIO 101, BIO 210, CHM 110, or PHY 201)

12TH GRADE

FALL SEMESTER

SPA 102 | Elementary Spanish II (4 Hours)
MAT 130 | Elementary Calculus
Choice (High school or dual credit)
Natural Science (4 Hours)
(ex. BIO 101, BIO 210, CHM 110, or PHY 201)

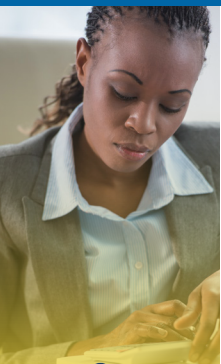
SPRING SEMESTER

MAT 120 | Probability & Statistics
PSY 201 | General Psychology
ENG 205 or 206 | English Literature I or II
Natural Science (4 Hours)
(ex. BIO 102, BIO 211, CHM 111, or PHY 202)

TOTAL CREDIT HOURS 72*

***Unless specified otherwise, all classes are 3 credit hours.**

Please note this track is subject to change as the student's high school schedule changes.



EARLY COLLEGE PATHWAY Accounting Degree

9TH GRADE

FALL SEMESTER

SPRING SEMESTER

BUS 123 | Business Law II
BUS 101 | Intro to Business

10TH GRADE

FALL SEMESTER

ECO 201 / ECO 210 / ECO 211
Elective: Humanities/Fine Arts

SPRING SEMESTER

MAT 107 / MAT 110 / MAT 120
ENG 101 | English Composition I

11TH GRADE

FALL SEMESTER

ACC 111 | Accounting Concepts
CPT 170 | Microcomputer Applications
SPC 205 | Public Speaking

SPRING SEMESTER

ACC 112 | Organizational Accounting
MGT 206 | Management Spreadsheets
ACC 150 | Payroll Accounting

SUMMER SEMESTER (REQUIRED)

ACC 115 | Managerial Accounting
ACC 240 | Computerized Accounting
ACC 101 | Accounting Principles I

12TH GRADE

FALL SEMESTER

ACC 102 | Accounting Principles II
ACC 124 | Individual Tax Procedures
ACC 201 | Intermediate Accounting I
ACC 230 | Cost Accounting I

SPRING SEMESTER

ACC 231 | Cost Accounting II
ACC 265 | Not-For-Profit Accounting
MGT 280 | Executive Development

TOTAL CREDIT HOURS 66*

*Unless specified otherwise, all classes are 3 credit hours.

Pathway Median Salary
for State of SC: **\$40,360**



EARLY COLLEGE PATHWAY Civil Engineering Technology Degree

9TH GRADE

FALL SEMESTER

ENG 160 | Technical Communications
Elective: Humanities/Fine Arts

SPRING SEMESTER

MAT 175 | Algebra & Trigonometry I
Elective: Social/Behavioral Science

10TH GRADE

FALL SEMESTER

EGR 120 | Engineering Computer Applications
EGT 106 | Print Reading & Sketching

SPRING SEMESTER

CET 105 | Surveying I
EGR 112 | Engineering Programming
EGT 151 | Introduction to CAD

SUMMER SEMESTER (REQUIRED)

CET 205 | Surveying II (4 Hours)
EGT 115 | Engineering Graphics II (4 Hours)
EGR 194 | Statics & Strength of Materials (4 Hours)

11TH GRADE

FALL SEMESTER

CET 216 | Soil Mechanics
EGT 252 | Advanced CAD

SPRING SEMESTER

CET 235 | Construction Methods & Estimating

12TH GRADE

FALL SEMESTER

CET 218 | Hydraulics
CET 250 | Transportation Engineering Technology

SPRING SEMESTER

GMT 101 | Introduction to GIS
CET 246 | Environmental Systems Technology

SUMMER SEMESTER (REQUIRED)

CET 255 | Senior Project in Civil Engineering Technology (1 Hour)

TOTAL CREDIT HOURS 61*

*Unless specified otherwise, all classes are 3 credit hours.



Pathway Median Salary
for State of SC: **\$46,620**



EARLY COLLEGE PATHWAY Computer Technology Degree

9TH GRADE

FALL SEMESTER

SPRING SEMESTER

10TH GRADE

FALL SEMESTER

ENG 101 | English Composition I
Elective: Social/Behavioral Science
MAT 107 / MAT 120 | Probability & Statistics

SPRING SEMESTER

ENG 260 | Advanced Technical Communications
Elective: Humanities/Fine Arts

11TH GRADE

FALL SEMESTER

IST 201 | Cisco Internet Working Concepts
CPT 162 | Intro to Web Page Publishing
CPT 285 | PC Hardware Concepts

SPRING SEMESTER

IST 202 | Cisco Router Configuration
CPT 168 | Programming Logic & Design
CPT 257 | Operating Systems

SUMMER SEMESTER (REQUIRED)

IST 190 | Linux Essentials
IST 203 | Advanced Cisco Router Configuration
IST 161 | Intro to Network Administration

12TH GRADE

FALL SEMESTER

IST 204 | Cisco Troubleshooting
CPT 242 | Database
IST 295 | Fundamentals of Voice Over IP
IST 290 | Special Topics in Information Sciences

SPRING SEMESTER

IST 291 | Fundamentals of Network Security I
CPT 240 | Internet Programming with Databases
IST 257 | Operating Systems

TOTAL CREDIT HOURS 63*

**Unless specified otherwise, all classes are 3 credit hours.*

Pathway Median Salary
for State of SC: **\$64,820**



EARLY COLLEGE PATHWAY Criminal Justice Degree

9TH GRADE

FALL SEMESTER

CRJ 101 | Introduction to Criminal Justice
CRJ 115 | Criminal Law I
CRJ 120 | Constitutional Law

SPRING SEMESTER

CRJ 130 | Police Administration
CRJ 210 | Juvenile & the Law
CRJ 222 | Ethics in Criminal Justice

10TH GRADE

FALL SEMESTER

CRJ 242 | Correctional Systems
ENG 101 | English Composition I

SPRING SEMESTER

CRJ 246 | Special Problems in CRJ
ENG 102 | English Composition II

**Student has completed all CRJ courses needed to graduate with a Criminal Justice certificate*

SUMMER SEMESTER (REQUIRED)

CRJ 230 | Criminal Investigations
CRJ 236 | Criminal Evidence
CRJ 126 | Criminal Justice Research Methods

11TH GRADE

FALL SEMESTER

PSY 201 | General Psychology
MAT 155 | Contemporary Mathematics

SPRING SEMESTER

CRJ 125 | Criminology
SOC 101 | Introduction to Sociology

12TH GRADE

FALL SEMESTER

CRJ 244 | Probation Pardon & Parole
CPT 170 | Microcomputer Applications
SPC 205 | Public Speaking

SPRING SEMESTER

CRJ 232 | White Collar Crime Investigation
OR CRJ 233 | Cyber Crime & the Law
Elective: Humanities/Fine Arts
CRJ 247 | Law Enforcement
& the Latino Community

TOTAL CREDIT HOURS 69*

**Unless specified otherwise, all classes are 3 credit hours.*

Pathway Median Salary
for State of SC: **\$49,140**



EARLY COLLEGE PATHWAY

Early Care & Education Degree

9TH GRADE

FALL SEMESTER

ECD 101 | Intro to Early Childhood
CPT 170 | Microcomputer Applications

SPRING SEMESTER

ECD 102 | Growth & Development I
ECD 133 | Science & Math Concepts

10TH GRADE

FALL SEMESTER

ECD 135 | Health, Safety and Nutrition
ECD 203 | Human Growth & Development II

SPRING SEMESTER

ECD 105 | Guidance/Classroom Management
ECD 132 | Creative Experiences
SPC 205 | Public Speaking

11TH GRADE

FALL SEMESTER

ENG 101 | English Composition I
ECD 108 | Family & Community Relations
ECD 201 | Principles of Ethics & Leadership in Early Care & Education

SPRING SEMESTER

MAT 155 | Contemporary Mathematics
Elective: Humanities/Fine Arts
ECD 109 | Administration & Supervision
ECD 252 | Diversity Issues in Early Care & Education

12TH GRADE

FALL SEMESTER

ECD 237 | Methods & Material
ECD 131 | Language Arts
ECD 107 | Exceptional Children

SPRING SEMESTER

PSY 201 | General Psychology
ECD 243 | Supervised Field Placement II

TOTAL CREDIT HOURS 63*

*Unless specified otherwise, all classes are 3 credit hours.



EARLY COLLEGE PATHWAY

Electronics Engineering Technology Degree

9TH GRADE

FALL SEMESTER

ENG 160 | Technical Communications
Elective: Humanities/Fine Arts

SPRING SEMESTER

MAT 175 | Algebra & Trigonometry I
Elective: Social/Behavioral Science

10TH GRADE

FALL SEMESTER

EET 113 | Electrical Circuits I (4 Hours)
EGR 120 | Engineering Computer Applications
EGT 151 | Introduction to CAD

SPRING SEMESTER

EET 131 | Active Devices (4 Hours)
EGT 252 | Advanced CAD
EGR 112 | Engineering Programming

SUMMER SEMESTER (REQUIRED)

EET 114 | Electrical Circuits II (4 Hours)
EET 274 | Selected Topics in Electrical/Electronics Engineering Tech

11TH GRADE

FALL SEMESTER

EET 145 | Digital Circuits (4 Hours)
EET 218 | Electrical Power Systems (4 Hours)

SPRING SEMESTER

EET 243 | Data Communications
EET 251 | Microprocessor Fundamentals (4 Hours)

12TH GRADE

FALL SEMESTER

EET 220 | Analog Integrated Circuits
EET 231 | Industrial Electronics (4 Hours)

SPRING SEMESTER

EET 235 | Programmable Controllers
EET 273 | Electronics Senior Project (1 Hour)

TOTAL CREDIT HOURS 65*

*Unless specified otherwise, all classes are 3 credit hours.

Pathway Median Salary for State of SC: **\$29,900**

Pathway Median Salary for State of SC: **\$65,470**



EARLY COLLEGE PATHWAY Human Services Degree

9TH GRADE

FALL SEMESTER

CPT 170 | Microcomputer Applications
SOC 101 | Introduction to Sociology

SPRING SEMESTER

HUS 101 | Introduction to Human Services
PSY 105 | Personal/Interpersonal Psychology

10TH GRADE

FALL SEMESTER

MAT 155 | Contemporary Mathematics
SOC 205 | Social Problems

SPRING SEMESTER

SPC 205 | Public Speaking
HUS 205 | Gerontology

SUMMER SEMESTER (REQUIRED)

ENG 101 | English Composition I
PSY 201 | General Psychology

11TH GRADE

FALL SEMESTER

PSY 203 | Human Growth & Development
PSY 212 | Abnormal Psychology

SPRING SEMESTER

HUS 110 | Orientation to Human Services (1 Hour)
HUS 208 | Alcohol & Drug Abuse
HUS 209 | Case Management

SUMMER SEMESTER (REQUIRED)

PSY 230 | Interviewing Techniques
PSY 235 | Group Dynamics

12TH GRADE

FALL SEMESTER

PSY 218 | Behavior Modification
Elective: Humanities/Fine Arts
HUS 251 | Supervised Field Placement II
(4 Hours)

SPRING SEMESTER

PSY 231 | Counseling Techniques
PSY 237 | Crisis Management
HUS 255 | Supervised Field Placement III (4 Hours)

TOTAL CREDIT HOURS 69*

**Unless specified otherwise, all classes are 3 credit hours.*



EARLY COLLEGE PATHWAY Management Degree

9TH GRADE

FALL SEMESTER

SPRING SEMESTER

BUS 123 | Business Law II
BUS 101 | Intro to Business

10TH GRADE

FALL SEMESTER

ECO 201 / ECO 210 / ECO 211
Elective: Humanities/Fine Arts

SPRING SEMESTER

MAT 107 / MAT 110 / MAT 120
ENG 101 | English Composition I

11TH GRADE

FALL SEMESTER

ACC 111 | Accounting Concepts
CPT 170 | Microcomputer Applications
BAF 101 | Personal Finance
MGT 101 | Principles of Management

SPRING SEMESTER

ACC 112 | Organizational Accounting
MGT 121 | Small Business Operations
MKT 101 | Marketing

SUMMER SEMESTER (REQUIRED)

MGT 255 | Organizational Behavior
SPC 205 | Public Speaking

12TH GRADE

FALL SEMESTER

ACC 101 | Accounting Principles I
MGT 240 | Management Decision Making
MKT 240 | Advertising
BUS 250 | International Business

SPRING SEMESTER

ACC 102 / ACC 150
MGT 206 | Management Spreadsheets
MGT 280 | Executive Development

TOTAL CREDIT HOURS 66*

**Unless specified otherwise, all classes are 3 credit hours.*

Pathway Median Salary
for State of SC: **\$35,980**

Pathway Median Salary
for State of SC: **\$50,890**



EARLY COLLEGE PATHWAY

Marketing Degree

9TH GRADE

FALL SEMESTER

SPRING SEMESTER

BUS 123 | Business Law II
BUS 101 | Intro to Business

10TH GRADE

FALL SEMESTER

ECO 201 / ECO 210 / ECO 211
Elective: Humanities/Fine Arts

SPRING SEMESTER

MAT 107 / MAT 110 / MAT 120
ENG 101 | English Composition I

11TH GRADE

FALL SEMESTER

ACC 111 | Accounting Concepts
CPT 170 | Microcomputer Applications
MKT 101 | Marketing

SPRING SEMESTER

ACC 112 | Organizational Accounting
MGT 101 | Principles of Management
MGT 206 | Management Spreadsheets
SPC 205 | Public Speaking

SUMMER SEMESTER (REQUIRED)

MKT 110 | Retailing
MKT 120 | Sales Principles

12TH GRADE

FALL SEMESTER

ACC 101 | Accounting Principles I
BAF 101 | Personal Finance
MGT 280 | Executive Development
BUS 250 | International Business

SPRING SEMESTER

MKT 140 | E-Marketing
MKT 240 | Advertising
MKT 250 | Consumer Behavior

TOTAL CREDIT HOURS 66*

*Unless specified otherwise, all classes are 3 credit hours.



EARLY COLLEGE PATHWAY

Mechanical Engineering Technology Degree

9TH GRADE

FALL SEMESTER

ENG 160 | Technical Communications
Elective: Humanities/Fine Arts

SPRING SEMESTER

MAT 175 | Algebra & Trigonometry I
Elective: Social/Behavioral Science

10TH GRADE

FALL SEMESTER

EGR 112 | Engineering Programming
EGR 120 | Engineering Computer Applications
EGR 175 | Manufacturing Process

SPRING SEMESTER

EGT 106 | Print Reading & Sketching
EGT 151 | Introduction to CAD
EGT 281 | Prototype Modeling

SUMMER SEMESTER (REQUIRED)

EGR 194 | Statics & Strength of Materials (4 Hours)
EET 103 | Introduction to Electronics

11TH GRADE

FALL SEMESTER

EEM 251 | Programmable Controllers
EGT 285 | Integrated Rapid Prototyping Applications
EGT 252 | Advanced CAD

SPRING SEMESTER

MET 224 | Hydraulics & Pneumatics
MET 231 | Machine Design (4 Hours)

12TH GRADE

FALL SEMESTER

MET 213 | Dynamics
MET 216 | Mechanics of Fluid Systems

SPRING SEMESTER

MET 226 | Applied Heat Principles (4 Hours)
MET 240 | Mechanical Senior Project (1 Hour)

TOTAL CREDIT HOURS 64*

*Unless specified otherwise, all classes are 3 credit hours.

Pathway Median Salary for State of SC: **\$50,440**

Pathway Median Salary for State of SC: **\$62,600**



Pathway Median Salary
for State of SC: **\$46,080**

EARLY COLLEGE PATHWAY

Paralegal Degree

9TH GRADE

FALL SEMESTER

LEG 135 | Intro to Law & Ethics
LEG 132 | Legal Bibliography

SUMMER SEMESTER (REQUIRED)

LEG 236 | Advanced Legal Writing
Elective: Humanities/Fine Arts

10TH GRADE

FALL SEMESTER

LEG 222 | Constitutional Law
LEG 214 | Property Law

SUMMER SEMESTER (REQUIRED)

LEG 121 | Business Law I
CPT 170 | Microcomputer Applications

11TH GRADE

FALL SEMESTER

LEG 214 | Property Law
LEG 231 | Criminal Law
ENG 101 | English Composition I

SUMMER SEMESTER (REQUIRED)

LEG 262 | Litigation Applications
PSY 201 | General Psychology

12TH GRADE

FALL SEMESTER

LEG 233 | Wills, Trusts & Probate
LEG 244 | Special Project for Paralegals

SPRING SEMESTER

LEG 230 | Legal Writing
LEG 120 | Torts

SPRING SEMESTER

LEG 201 | Civil Litigation I
PHI 110 | Ethics

SPRING SEMESTER

MAT 155 | Contemporary Mathematics
ENG 102 | English Composition II

SPRING SEMESTER

LEG 232 | Law Office Management
LEG 270 | Paralegal Certification

TOTAL CREDIT HOURS 69*

*Unless specified otherwise, all classes are 3 credit hours.





CREATING PATHWAYS BEYOND ECA

Looking for a pathway in other areas? We have other options for you. The next few pages will provide information on our Certificate and Allied Health Pathways.

CERTIFICATE PATHWAYS

Florence-Darlington Technical College also has prepared a number of pathways through our certificate programs that can fast track students into the workforce. Students who choose these pathways will complete a certificate in the area of study by high school graduation. If a student chooses this pathway and there is an Associate Degree program associated with it, then the credits earned via the certificate can be applied directly to the Associate Degree program.

HEATING, VENTILATION & AIR CONDITIONING (HVAC) TECHNOLOGY

Heating, Ventilation & Air Conditioning (HVAC) technicians have the knowledge and skills in installing, maintaining, and troubleshooting heating, air conditioning, and refrigeration systems that control the temperature and air quality in residential and commercial structures.

MEDIAN SALARY: \$44,130 | \$21.22 PER HOUR*

INDUSTRIAL MAINTENANCE TECHNOLOGY

Industrial Machinery Mechanics and machinery maintenance workers maintain and repair factory equipment and other industrial machinery, such as conveying systems, production machinery, and packaging equipment. Millwrights install, dismantle, repair, reassemble, and move machinery in factories, power plants, and construction sites.

MEDIAN SALARY: \$54,460 | \$26.18 PER HOUR*

MACHINE TOOL TECHNOLOGY

Machine tool technicians interpret blueprint information and translate into actionable items and perform setup and operation of manual machines, such as band saw, lathe, mill, and drill press.

MEDIAN SALARY: \$48,010 | \$23.08 PER HOUR*

MEDICAL ASSISTING DIPLOMA

Medical Assistants are multi-skilled health professionals who work under the supervision of physicians in their office practices and other medical settings, performing a broad range of administrative duties.

MEDIAN SALARY: \$34,270 | \$16.48 PER HOUR*

PHLEBOTOMY TECHNICIAN CERTIFICATE

Phlebotomists (PBT) draw blood by venipuncture or skin puncture collection for laboratory tests, transfusions, donations, and research. PBTs must become familiar with hospital procedures and environments, while demonstrating appropriate bedside manners.

MEDIAN SALARY: \$34,530 | \$16.60 PER HOUR*

WELDING

This program will provide skills that will enable the student to produce structurally sound and quality welds.

MEDIAN SALARY: \$45,344 | \$21.80 PER HOUR*

ALLIED HEALTH PATHWAYS

Although we have a number of Allied Health programs at FDTC, we do not currently offer direct pathways that will allow students to achieve these degrees before graduating high school. However, earning an AS or an AA Degree will help to ease their pathway into our Allied Health programs upon their graduation from high school. Students should work with FDTC advisors to develop a course schedule that best fits one of the Allied Health programs below.

CERTIFIED NURSING ASSISTANT (CNA)

A Certified Nursing Assistant (CNA) assesses and reports patients' physical, mental, and emotional conditions, assists patients with walking and getting out of bed, helps set up medical equipment, makes patient beds and cleans rooms, serves meals to patients, and provides emotional and social support. CNAs are employed in healthcare facilities, physician's offices, home care agencies, and long term care facilities.

MEDIAN SALARY: \$28,891 | \$13.95 PER HOUR*

DENTAL HYGIENE

Dental Hygienists perform a variety of duties including those related to prevention of oral and dental diseases and direct patient care. Dental Hygienists must be reliable, have good manual dexterity, and be able to communicate and work effectively with patients and other members of the dental office staff.

MEDIAN SALARY: \$71,100 | \$34.18 PER HOUR*

MEDICAL LAB TECHNOLOGY

Medical Lab Technology personnel work in hospital laboratories in the specialized areas of hematology, blood banking, microbiology, clinical chemistry, or as a generalist in all the areas. They can be employed in physicians' offices, medical schools, pharmaceutical companies, public health agencies such as the Department of Health & Environmental Control, and veterinarians' offices.

MEDIAN SALARY: \$47,860 | \$23.01 PER HOUR*

LICENSED PRACTICAL NURSE (LPN) | REGISTERED NURSE (RN)

Nurses care for and about patients, families, and communities across the life span. The nurse is a member of the health care team who utilizes caring behaviors, communication skills, critical thinking, and professional behaviors to serve as a patient advocate, manage patient care and teach self-care to promote wellness, optimal health and/or a peaceful death. Nurses are employed in healthcare facilities, physician's offices, home care agencies, industries, and long term care facilities.

MEDIAN SALARY for LPN: \$46,820 | \$22.81 PER HOUR*

MEDIAN SALARY for RN: \$72,654 | \$34.93 PER HOUR*

RADIOLOGIC TECHNOLOGY

Radiographers are employed in health care facilities including specialized imaging centers, urgent care clinics, and private physician offices. The projected growth in job opportunities for radiologic technologists will be 7 percent faster than average over the next decade.

MEDIAN SALARY: \$59,280 | \$28.50 PER HOUR*

RESPIRATORY CARE

Respiratory therapists work closely with physicians and nurses in the treatment and diagnosis of various breathing disorders. Respiratory therapists, practicing under a physician's direction, assume primary responsibility for all respiratory care therapeutic treatments and diagnostic procedures, including the supervision of respiratory therapy technicians.

MEDIAN SALARY: \$60,444 | \$29.06 PER HOUR*

SURGICAL TECHNOLOGY

Surgical Technologists are highly skilled allied health personnel who perform multiple technical tasks within the surgical environment. Surgical technologists prepare the operating room, including the sterile field, setting up surgical equipment, supplies and solutions. Surgical technologists work as members of a healthcare team alongside physicians and surgeons, registered nurses, and other healthcare workers.

MEDIAN SALARY: \$46,654 | \$22.43 PER HOUR*

COMING DOWN THE LINE

Currently, we do not have a clear pathway for dual enrollment students to complete this career pathway, but we are working on ways to incorporate this pathway in the future. Let us know if you have an interest in this area of study and we will work with you to create a path that fits your career goals.

AUTOMOTIVE TECHNOLOGY

Automotive Service Technicians inspect, maintain, and repair cars and light trucks. Graduates will demonstrate knowledge of safety and environmental requirements in the transportation repair industry, differentiate engine system's components, and demonstrate proficiency in the servicing of automotive brake systems and in electrical/electronic fundamentals.

MEDIAN SALARY: \$37,585 | \$18.07 PER HOUR*

AUTO COLLISION

This program trains auto body technicians in the use of equipment and materials used in the auto body repair industry. The study of unibody, structure repair, sheet metal repair, welding spot repair, estimating and refinishing are covered. Graduates are prepared for entry-level positions in the auto body repair industry.

MEDIAN SALARY: \$42,473 | \$20.42 PER HOUR*

COSMETOLOGY

Cosmetologists perform all phases of cosmetology-related skills, including hair shaping, hairstyling, hair coloring, chemical services, manicuring, and skin care.

MEDIAN SALARY: \$26,644 | \$12.81 PER HOUR*

*SOURCE: https://www.bls.gov/oes/current/oes_sc.htm#00-0000

Welcome to Florence-Darlington Technical College! As an Early College Academy student, you may be wondering what resources are available to you on our campus. We are excited to share services that we offer to help you succeed in your academic and career goals.

ADA DISABILITY SERVICES

Our college is committed to providing equal access to all students. If you have a disability or need accommodations to support your learning, our ADA Disability Services office can work with you to create an individualized plan.

CAREER SERVICES

Our Career Services staff is here to help you explore career options and develop the skills you need to succeed in the job market. We offer career assessments, resume and cover letter reviews, interview preparation, workshops, career fairs and job search assistance.

LIBRARY SERVICES

Our library is a great resource for research, studying, and relaxation. We offer access to books, e-books, databases, and journals and streaming services.

STUDENT SUPPORT PROGRAMS

With over five specialized student support programs, FDTC offers academic coaching and intensive tutoring, peer mentoring, student learning communities and more at no charge to eligible students. Counseling services are available to all students to help manage stress, anxiety and other personal concerns.

VIRTUAL SUPPORT

For those who may not be able to visit the campus for in-person tutoring or counseling, our virtual support services provide remote assistance from qualified professionals who can help you through digital messaging, video and telephone calls.

We hope you find this information helpful as you begin your journey! For detailed information on campus resources, please visit fdtc.edu/student-life.

CONTACT US



Call us 843.661.TECH



Email us DualEnrollment@fdtc.edu



Visit us

Florence-Darlington Technical College
2715 West Lucas Street | PO Box 100548
Florence, SC 29501

Tuition Assistance

Our tuition counselors will work with you to determine your eligibility for tuition assistance.

To schedule an appointment, call **843.661.TECH**



Policy on Non-Discrimination:
Florence-Darlington Technical College is an equal opportunity institution and Florence-Darlington Technical College does not discriminate on the basis of race, color, religion, national or ethnic origin, creed, marital status, veteran status, disability, sex, or age in its admission policies, programs, activities, or employment practices. In compliance with Title IX of the Educational amendments of 1972 and section 504 of the Rehabilitation Act of 1973, Florence-Darlington Technical College offers access and equal opportunity in its admissions policies, its academic programs and services, and its employment to disabled individuals in that no otherwise qualified person will be denied these provisions on the basis of a disability. The College's Title IX coordinator is the Director of Enrollment Management (843.661.8029). The Section 504 Coordinator is the Director of Internal Relations (843.661.8321). They can be reached at the following location: Florence-Darlington Technical College, 2715 West Lucas Street, P. O. Box 100548, Florence, South Carolina 29501-0548, 843.661.TECH(8324). Florence-Darlington Technical College operates under an "open door" policy that welcomes all students without regard to race, color, religion, national or ethnic origin, creed, marital status, veteran status, disability, sex, or age. Admission to the College, however, does not mean students will be admitted immediately to a program with specialized admission requirements. This information is provided in compliance with the Student Right-to-Know and Campus Security Act of 1991 and the Crime Awareness and Campus Security Act of 1990.

Last updated 5/25/23



**2715 West Lucas Street
Florence, South Carolina
843.661.TECH | fdtc.edu**